

Anatomy: LOWER EXTREMITY
 Sub-Anatomy: Rheumatology Ankle- 3T Ortho

-Exams **ORDERABLE- ANKLE**
 - Routine Coil: Ankle/Chimney coil

SEQUENCE - BASICS														
PLANE	SEQ	Slice thickness (mm)	Misc / Comment	MT X	gap	% R F O V	Voxel size (mm)	TR	TE	N S	ETL Turbo Factor	Phase Encode	Scan TIME (min)	Pixel Shift BW-kHz
ROUTINE														
	3 plane scout		Only use GRE											
1	Cor fsPD	3.5			10%		0.4x0.5	3000	35-40					
2	Ax PD mDIXON	3.5			10%		0.4x0.5	3000	35-40					
3	Sag fsPD	3.5			10%		0.4x0.5	3000	35-40					
4	Cor T2 mDIXON	3-4			10%		0.4x0.5	3000	55					
5	Cor 3D PD TSE	3D					0.65							
6	Ax DWI	4/0	7 b values											
7	Sag T1 mDIXON	3D	pre				1x1x1							
8	COR 4D TRAKS		25 dynamic scans											
9	Sag T1 mDIXON	3D	Post											
↓ OPTIONAL ↓														
	STIR	3-4	Failed fat sat		10%		0.4x0.5							

Instructions: FOV and Coverage- On axials, cover 1-2 cm above the ankle joint to skin surface. On coronals, cover from posterior skin to base of metatarsals. On sagittals, cover from slightly medial to medial malleolus to slightly lateral to lateral malleolus.

Large subject: Increase voxel-0.7 mm., if problem with SNR or wrap, etc- call OPB/PMH for remote monitoring help.

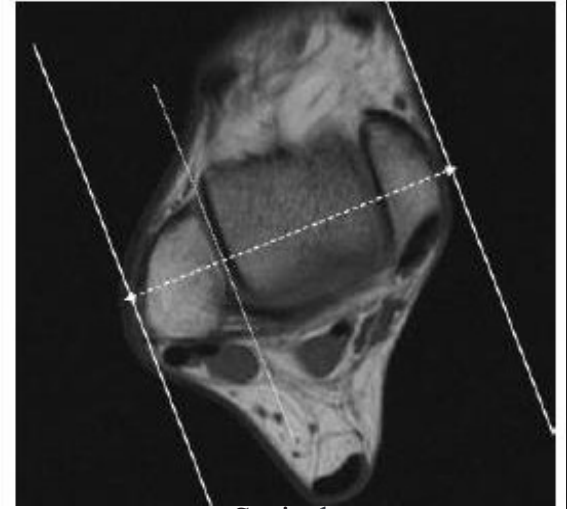
Others- Always put marker at the site of most pain, injury or swelling. If motion observed, stop the scan, instruct patient to lay still and repeat the sequence.



Axial



Coronal



Sagittal